



QuiPower App

User Manual



⚠ NOTE!

All information in this document has been compiled and checked with the greatest possible care. Nevertheless, this publication may contain technical or other inaccuracies or typographical errors. The information contained herein is subject to periodic changes; such changes will be incorporated into new editions of the publication. Enequi may make improvements and/or changes in the services described in this publication at any time. Enequi assumes no liability for the use of outdated documents. Installers and users are therefore advised to check the current version at www.enequi.com or by scanning the provided QR code.



Table of Contents

1. QuiPower Mobile App	4
2. Create a QuiPower Account	5
2.1. Email Verification	5
3. Main Page	6
3.1. Create a QuiPower Node System	6
3.2. Go To QuiPower Storage Portal	7
3.3. View System Invitations	7
3.4. My Account	8
4. QuiPower Node	9
4.1. Add a QuiPower Node	9
5. Settings	12
5.1. General Settings	12
5.1.1. System Settings	12
System Name	12
Switch Settings	12
Hand Over System	13
Leave System	13
Delete System	13
5.1.2. Members	14
5.2. Device Settings	14
5.2.1. Devices	14
5.2.2. Rooms	15
5.2.3. Scenes	15
5.2.4. Schedules	16
5.2.5. Timers	17
5.2.6. Program Switches	17
5.3. Energy Settings	18
Connect QPN Brige to QuiPower Core	18
Add the QPN Bridge to QuiPower app	18
5.3.1. Automated Scenes	18
6. Exclusion of Liability	19

1. QuiPower Mobile App

The mobile app works with the QuiPower Node energy control device. This integration adds more functions and improves energy management.

Enequi aims to continuously improve the app for a better user experience.



Download and install the QuiPower mobile app on a mobile device using these steps:



For iOS Devices:



1. Open the App Store on the iOS device.
2. Search for "QuiPower" in the search bar.
3. Find the QuiPower app in the search results.
4. Tap "Get" or "Download" to start the installation.
5. Wait for the app to download and install.
6. After installation, find the QuiPower app on the home screen.

For Android Devices:

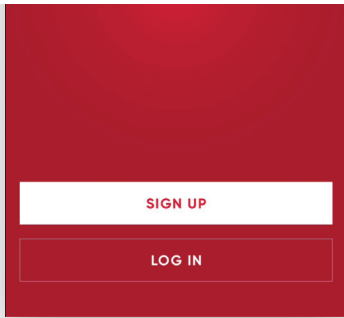


1. Open the Google Play Store on the Android device
2. Search for "QuiPower" in the search bar.
3. Find the QuiPower app in the search results.
4. Tap "Install" to download and install the apps.
5. Wait for the installation to complete.
6. After installation, find the QuiPower app in the app drawer or on the home screen.

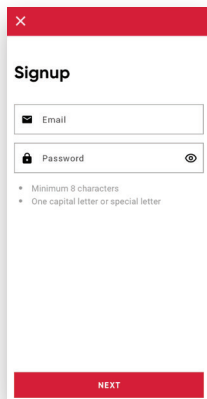
2. Create a QuiPower Account

To use the features of the QuiPower mobile app, create an account. The registration process is simple. Follow these steps to sign up:

1. Open the QuiPower mobile app on your smartphone.
2. On the login page, tap "Sign Up."

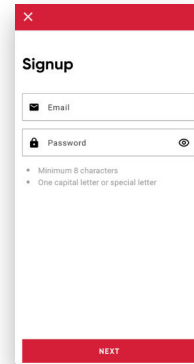


3. Provide the following information:
 - **Email:** Enter your email address. This will be your username. A verification email will be sent to this address.
 - **Password:** Create a secure password with at least eight characters. Use a combination of uppercase and lowercase letters, numbers, and a special character.



4. Tap Next.
5. Select your role: "Owner" or "Electrician."

6. Read the QuiPower user terms and privacy policy. Agree to the terms by checking the approval box.



7. Tap "Sign Up" to complete the registration.

After registering, log in to your account. Keep your account credentials secure.

2.1. Email Verification

Email verification is required to activate the QuiPower account. Follow these steps to verify your email address:



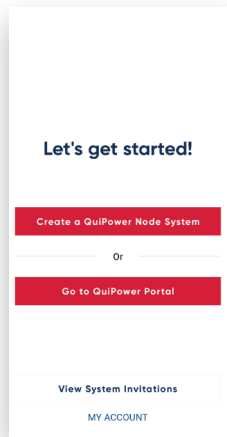
Check Your Email

We have sent you a verification email at info@israelalva.se

1. Check your email inbox for a message titled "Verify your email address" from Enequi support. The email may take a few minutes to arrive. If you do not see it, check the spam folder.
2. Open the email and click the "Verify your email address" link. This action confirms your email address for the QuiPower account.

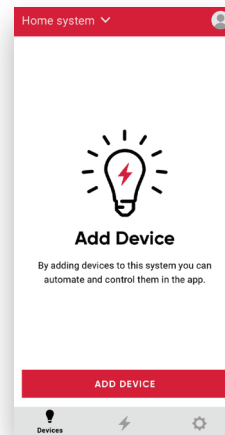
3. Main Page

After logging into the app for the first time, the main page shows four options. Each option is explained below.



NOTE!

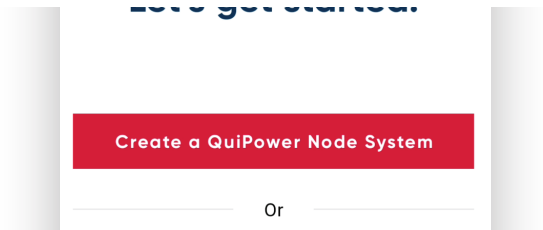
- After you create the first system, the main page will change, and new icons will appear.



3.1. Create a QuiPower Node System

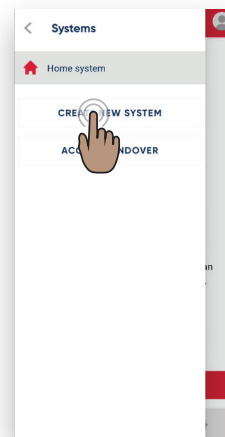
Create a new system to add and control a QuiPower Node.

1. Tap "Create a QuiPower Node System" on the main page.

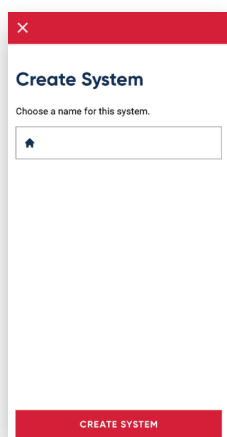


To create a secondary system:

1. Tap the first system name in the upper left corner, such as "Home system."
2. A list of systems will appear on the left side of the screen. You can select "Create a new system" or "Accept handover."

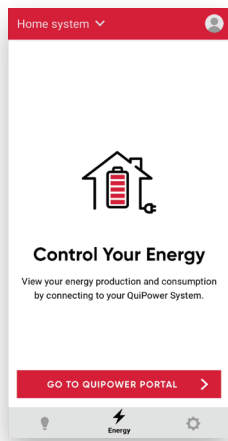
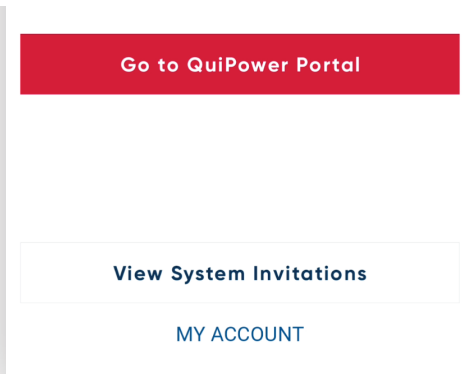


2. Enter a name for the system, such as "Home system."



3. Tap "Create System" to register the new system.

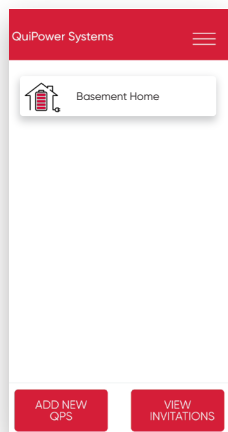
3.2. Go To QuiPower Storage Portal



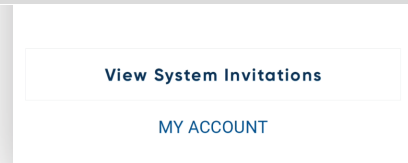
To manage a QuiPower Storage system:

1. Select "Go To QuiPower Storage Portal" on the start page or tap the flash icon.
2. This action links the app to the web app.

For detailed instructions, refer to the separate manual for the QuiPower web app.

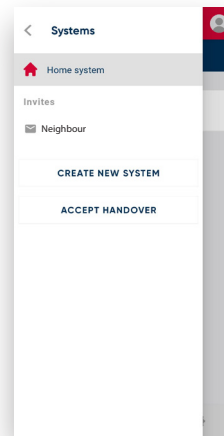


3.3. View System Invitations

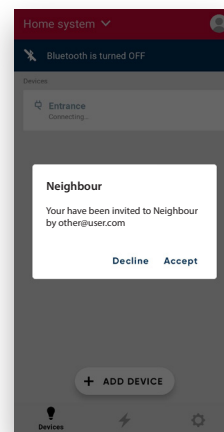


To view invitations from other users:

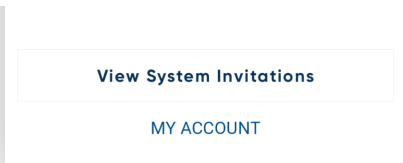
1. Tap "View System Invitations" or go to Systems > Invites.



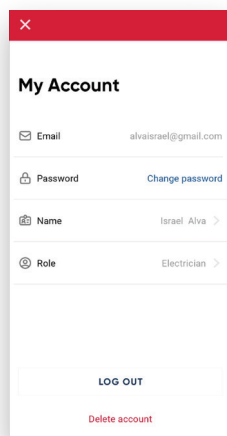
2. Tap the invitation and choose to accept or decline it. The new system will then appear under systems.



3.4. My Account

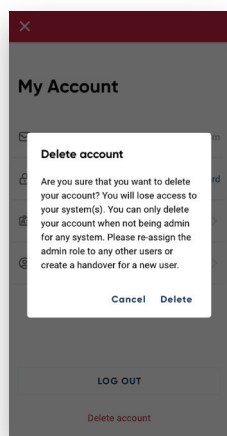


This section allows you to access and review personal information, such as your name and email address. You can also change your account password, log out, or delete your account.



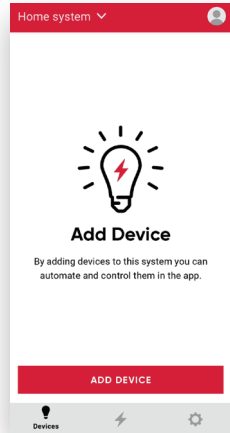
⚠ NOTE!

- Deleting your account will remove your access to the system(s). You can only delete your account if you are not an admin for any system. Before deleting your account, reassign the admin role to another user or create a handover for a new user.



4. QuiPower Node

4.1. Add a QuiPower Node



⚠ CAUTION!

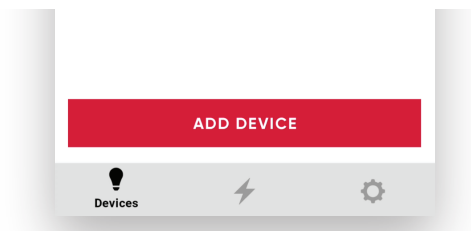
- Before you start, ensure that the QuiPower Nodes are correctly installed and powered on.

⚠ NOTE!

- There are three types of QuiPower Nodes currently available:
QPN-R1: A relay version for On/Off control.
QPN-Bridge: A gateway to QuiPower Storage systems (Refer to Automated scenes)
QPN-MF1: A multi-function dimmer (upcoming product).

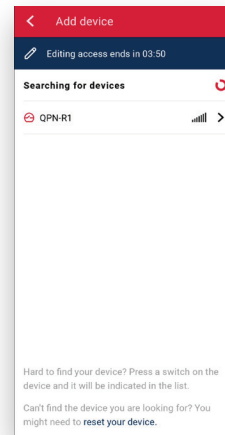
Follow these steps to add a QuiPower Node to a system:

1. Tap "Add Device" to start scanning.

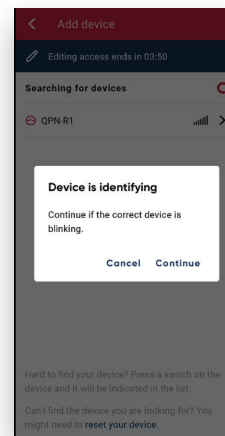


2. The app will show a list of nearby unconnected QuiPower Nodes. The signal strength, shown as bars next to the device, helps identify the closest node. The node with the most bars is the nearest.

If the QuiPower Node is connected to a switch, press the switch. The corresponding device in the list will be highlighted in gray for a few seconds.

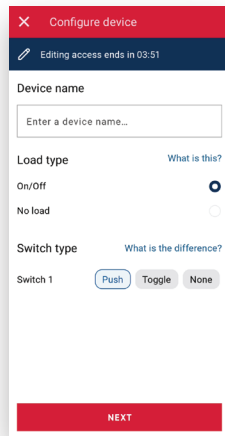


3. Select a QuiPower Node from the list.
The selected node's internal LED will blink yellow, and the internal relay will click. If a load is connected (e.g., a lamp), it will turn on and off. The screen will display "Device is identifying." Tap "Continue" if the correct node is selected.

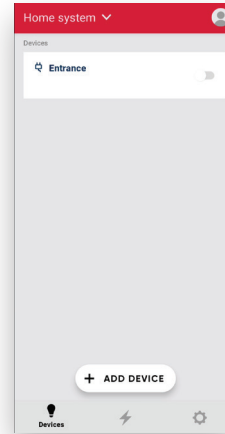


The internal LED will glow red during the provisioning process.

4. Enter the following information for the new QuiPower Node:



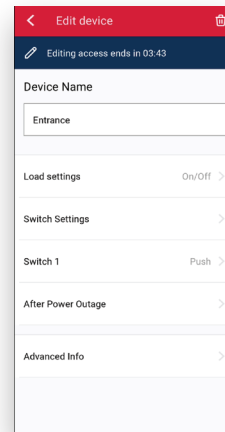
In this example, a QuiPower Node named "Entrance" was added to the Home system. The load type is On/Off, and the switch type is Push. You can now control the On/Off function of the QuiPower Node.



- Device name:
Assign a descriptive name to the node for easy identification during maintenance or adjustments.
- Load type:
On/Off: Enables On-and-Off functionality.
No load: The output is not used; use it as a mesh extender or extra push button.
- Switch type:
Push: Returns to its original position when released; recommended for full functionality.
Toggle: Stays in position when released; cannot be used for dimming and limits other functions.
None: The switch input is not used, and nothing is connected.

NOTE!

- You can adjust all settings later under Settings > Devices.

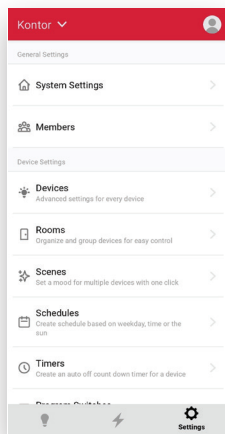


5. Tap Finish.

5. Settings

The Settings section includes advanced options such as system information (e.g., name, invitation handling, and member management). You can also create groups of nodes called Rooms, set up scenarios for Rooms or individual nodes, and more. Below is a description of each submenu in the Settings section.

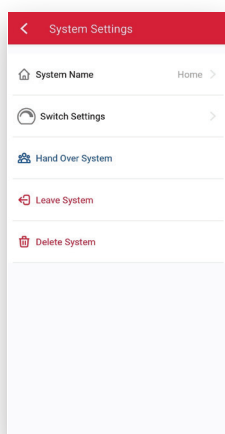
5.1. General Settings



5.1.1. System Settings

System Name

The system name is the name of the selected system, for example, "Home system."



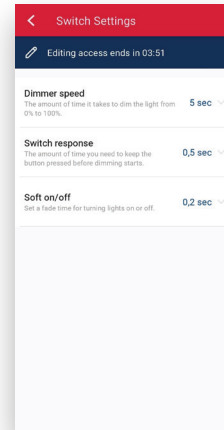
To change the system name:

1. Tap the current name.
2. Enter the new name.
3. Tap "Save" to apply the changes.

⚠ NOTE!

- Changes must be made within 4 minutes.

Switch Settings



⚠ NOTE!

- Newly provisioned nodes will use default settings as configured in the *System Settings* > *Switch Settings*. These default values can be adjusted later in the device settings.

Dimmer Speed:

The time it takes to dim the light from 0% to 100%. Choose a duration between 5 to 10 seconds.

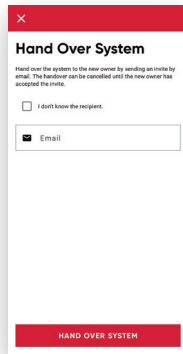
Switch Response:

The time the button needs to be pressed before dimming starts. Choose a duration between 0.1 to 1.0 seconds.

Soft On/Off:

Set a fade time for turning lights on or off. Choose a duration between 0.2 to 1.0 seconds.

Hand Over System



To transfer system ownership:

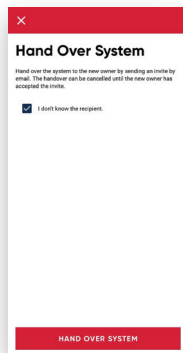
1. Enter the new owner's email address.
2. Tap "Hand over system" to send an invite to the new owner.

NOTE!

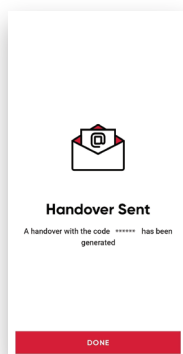
- You can cancel the handover if the new owner does not accept the invitation.

If you do not know the recipient's email address:

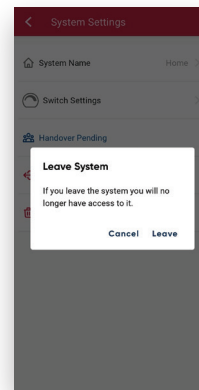
1. Select "I don't know the recipient."
2. A handover code will be generated and sent to your email.



Share the handover code with the person who needs to control the system. The new user must go to Systems > Accept Handover and manually enter the code to gain control of the system.

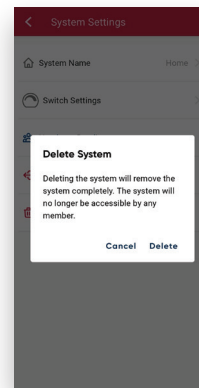


Leave System



Leaving the system will result in losing access to it. If you are the only user of the system, you cannot leave; instead, delete the system or hand it over to another user. Confirm by tapping "Leave" a second time.

Delete System

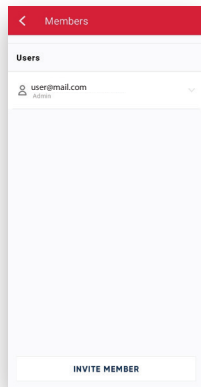


Deleting the system will remove it completely, making it inaccessible to any member. Confirm the deletion by tapping "Delete."

NOTE!

- All nodes must be deleted one by one before deleting the system.

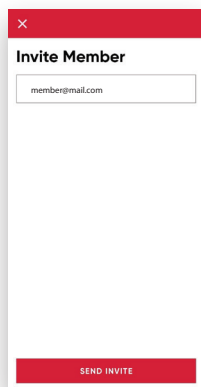
5.1.2. Members



Users:

Manage invited users in this section.

Tap a user's name to assign them as an administrator, standard user, or to remove them from the system.



Invite Members:

To invite new members:

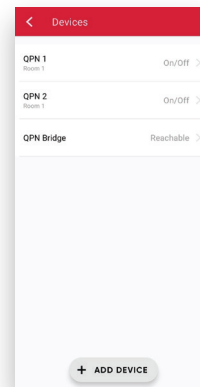
1. Tap "Invite Members."
2. Enter the user's email address.
3. Tap "Send Invite."

NOTE!

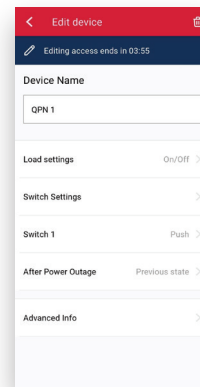
- Invitations can be canceled as long as the invited user has not accepted them.

5.2. Device Settings

5.2.1. Devices



Select "Devices" to modify settings for individual devices connected to the selected system.



Device Name:

Name of the device entered during pairing.

Load Settings:

Type of load. Refer to *QuiPower Node > Add a QuiPower Node* for details.

Switch Settings:

Refer to *General Settings > Switch Settings* for more information.

Switch 1 and 2:

Switch type. See *QuiPower Node > Add a QuiPower Node* for details.

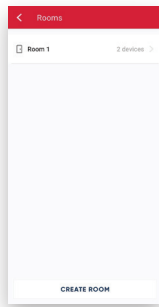
After Power Outage:

- **Keep Off:** Keeps the device off regardless of its state before the outage.
- **Previous State:** Returns the device to its last state before the outage.
- **Always On:** Turns the device on irrespective of its state before the outage.

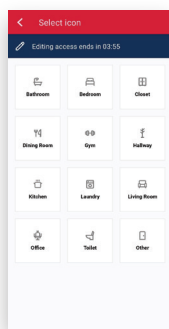
Advanced Info:

Access more detailed information, such as GPS coordinates, version info, production date, etc.

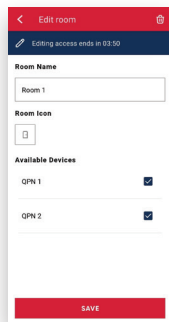
5.2.2. Rooms



To organize and control multiple Nodes simultaneously, create a Room:



1. Select "Rooms."
2. Tap "Create Room."
3. Choose an icon for the Room.

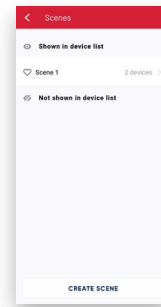


4. Enter a new name or keep the suggested name.
5. Select the Nodes to include in the room under "Available Devices."
6. Tap "Save."

⚠ NOTE!

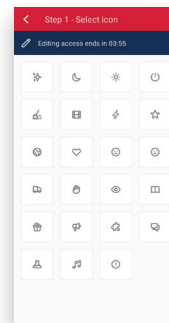
- One Node can only be part of one room.
- The room will appear on the main page. All Nodes included in the room will be hidden. Tap the group name to expand the menu and view or control the Nodes individually.
- Deleting a room will display all Nodes individually on the first page again.

5.2.3. Scenes

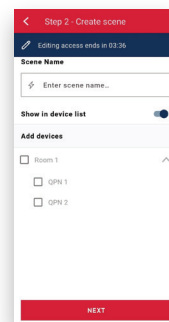


To further organize and control multiple Nodes at the same time, create different modes called Scenes. You can add individual Nodes or entire rooms to Scenes.

1. Select "Scenes."
2. Tap "Create a Scene."



3. Choose an icon for the scene.

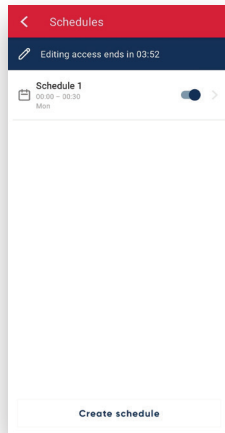


4. Enter a name for the scene.
5. Decide if the scene should appear on the start page as a quick link.
6. Add Nodes or rooms to the scene.
7. Press "Next."
8. Choose which devices should be on or off.
9. Press "Save."

⚠ NOTE!

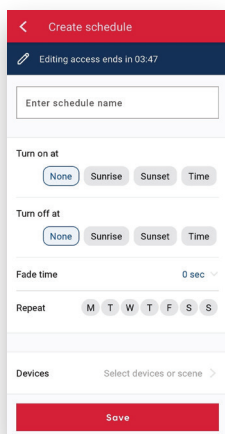
- If "Show in device list" is enabled, the scene will appear on the first page as a quick link.

5.2.4. Schedules



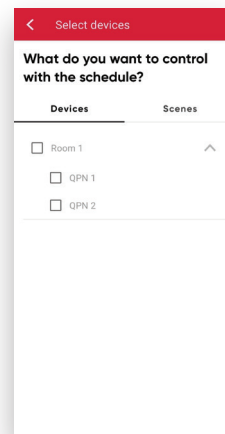
Create schedules based on the day of the week, time, or astro function:

1. Tap "Schedules."



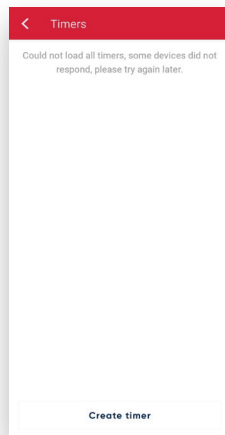
2. Tap "Create Schedule."
3. Name: Enter a name for the schedule.
4. Turn on at: Choose when the device(s) should be turned on:
 - None
 - Sunrise: Choose how many minutes before or after sunrise (-600 to +600 minutes).
 - Sunset: Choose how many minutes before or after sunset (-600 to +600 minutes).
 - Time: Choose the specific time (hour and minutes). Press "OK."

5. Turn off at: Choose when the device(s) should be turned off:
 - None
 - Sunrise: Choose how many minutes before or after sunrise (-600 to +600 minutes).
 - Sunset: Choose how many minutes before or after sunset (-600 to +600 minutes).
 - Time: Choose the specific time (hour and minutes). Press "OK."
6. Set the fade time (0 - 600 seconds).
7. Choose repeat options: Select the weekdays the schedule should apply.



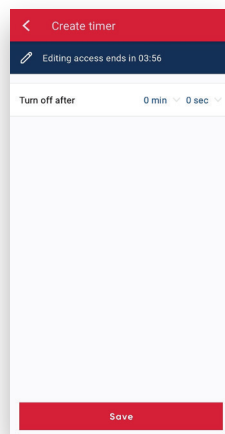
8. Select the Rooms, individual Nodes, or scenes to be controlled.
9. Tap "Save."

5.2.5. Timers



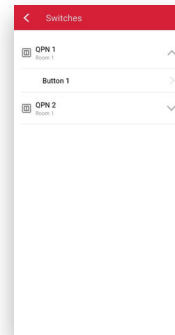
Create a shutdown timer for a specific device:

1. Tap "Timers."
2. Tap "Create Timer."



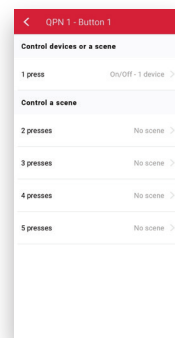
3. Select the Node to turn off.
4. Choose the number of minutes (0-1000 min) and seconds (0-59 sec).
5. Press "Save."

5.2.6. Program Switches

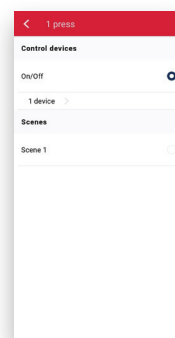


If the Node has a connected switch, you can activate different scenarios based on the number of times the button is pressed in quick succession:

1. Select "Program Switches."
2. Select the Node with the connected switch to be programmed.
3. Select "Button."



4. For one button press:
 - Choose to turn ON/OFF the entire group/room or a specific Node, or select a scenario to be activated.



5. For two to five button presses:
 - Select the number of button presses.
 - Select the specific scenario to be activated.

5.3. Energy Settings

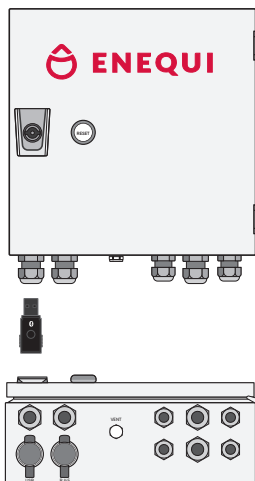
Automatic scenes are scenarios controlled by a QuiPower Core through a QuiPower Node Bridge (QPN Bridge) via Bluetooth.

⚠️ WARNING!

- Turn off the QuiPower Core before connecting or disconnecting the QuiPower Node Bridge.

Connect QPN Bridge to QuiPower Core

1. Turn off the main power to the QuiPower Core.
2. Plug the QPN Bridge into the USB input located at the bottom of the QuiPower Core.
3. Turn on the main power and wait for the QuiPower Core to start.
4. Activate the Bridge function via the QuiPower webapp, **QuiPower Systems > "your system" > Settings > Advanced Configuration > QPN Bridge.**



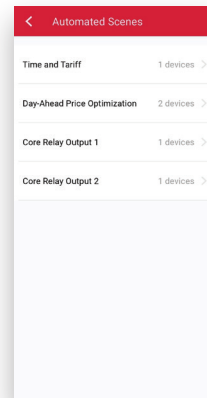
Add the QPN Bridge to QuiPower app

1. Ensure Bluetooth and GPS are enabled on your mobile device.
2. Select a system in the QuiPower app
3. Tap "Add Device."
4. Select the device named QPN Bridge.
5. Press "Continue."
6. Name the device, such as "Bridge."
7. Press "Next."

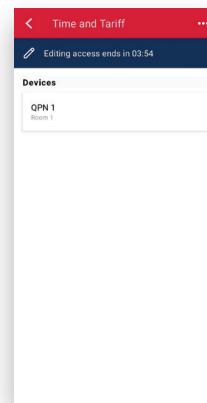
⚠️ NOTE!

- The QPN Bridge will not appear on the first page. To make changes or delete the device, go to Settings > Devices.

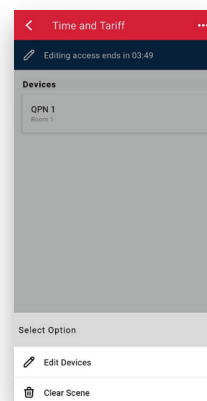
5.3.1. Automated Scenes



1. Select an automatic scene.



2. Tap the three dots in the top right corner.



3. Select "Edit Devices."
4. Choose the Nodes or Rooms to include in the automatic scene.
5. Tap "Save."

6. Exclusion of Liability

All information in this document has been compiled and checked with the greatest possible care. Nevertheless, this publication may contain technical or other inaccuracies or typographical errors. The information contained herein is subject to periodic changes; such changes will be incorporated into new editions of the publication. Enequi may make improvements and/or changes in the services described in this publication at any time. Enequi assumes no liability for the use of outdated documents. Installers and users are therefore advised to check the current version at www.enequi.com.

Enequi shall not be liable for any direct, indirect or consequential damages, costs or losses including, without limitation, economic loss of any kind, loss of or damage to property, personal injury, damage or injury caused by or resulting from misuse or improper installation, integration or operation of the product.

Enequi disclaims any liability for direct or indirect damages resulting from the following:

- Improper installation or operation.
- Modifications, alterations or attempted repairs.
- Improper use or operation.
- Failure to comply with applicable safety standards or regulations.
- Flooding, lightning, over voltage, storm, fire (forces of nature).

Enequi reserves the right to make changes that improve the functions of the QuiPower app.

